



NATIONAL KIDNEY REGISTRY[®]
FACILITATING LIVING DONOR TRANSPLANTS



KIDNEY FOR LIFE
BETTER MATCHES = BETTER OUTCOMES

Quarterly Report

Q3 2024

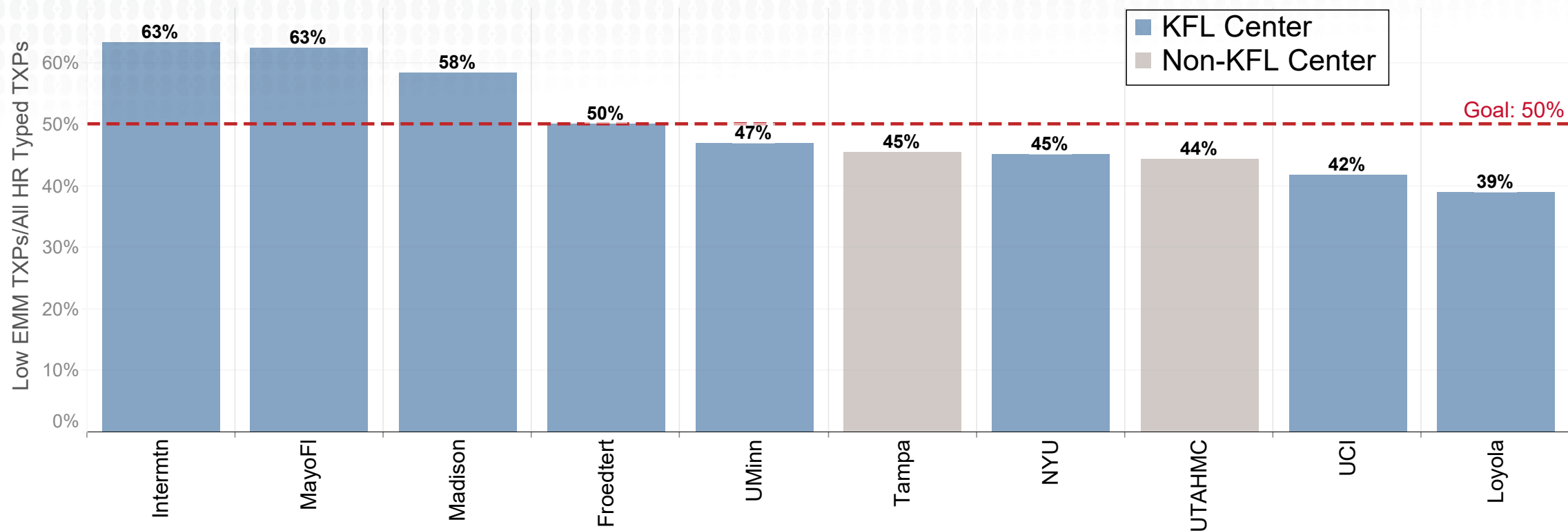
Table of Contents

Top 10 Centers: 6-Month Success Rate <i>Low Eplet Mismatch (EMM) TXPs as a Percent of All High-Resolution Typed TXPs</i>	3
KFL: Low Eplet Mismatch Transplants <i>Compatible Pairs</i>	4
KFL: DNA Collection for Donors and Patients <i>More Patients Are Returning the DNA Collection Kits</i>	5
KFL: Percent of Low Eplet Mismatch Transplants <i>Voucher and Paired</i>	6
KFL: 1-Year Antibody Screening Result <i>Unsensitized Recipient</i>	7
Top 10 KFL Centers: Low Eplet Mismatch Transplants <i>Compatible and Incompatible Pairs: Last 12 Months</i>	8
Top 10 KFL Centers: Low Eplet Mismatch Transplants <i>Compatible Pairs: Last 12 Months</i>	9
Actual Wait Times: Low Eplet Mismatch Transplants <i>Compatible Pairs: Last 12 Months</i>	10
KFL: Expert System Center Growth	11
KFL Top Centers: Engineered Low Eplet Mismatch Transplants <i>Low EMM TXPs/NKR-Facilitated Transplants: Last 12 Months</i>	12
Resources	13



Top 10 Centers: 6-Month Success Rate

Low Eplet Mismatch (EMM) TXPs as a Percent of All High-Resolution Typed TXPs



Low EMM TXPs	19	5	7	7	15	5	14	4	5	7
All High Res. Typed TXPs*	30	8	12	14	32	11	31	9	12	18

Minimum 8 High Res. Typed TXPs

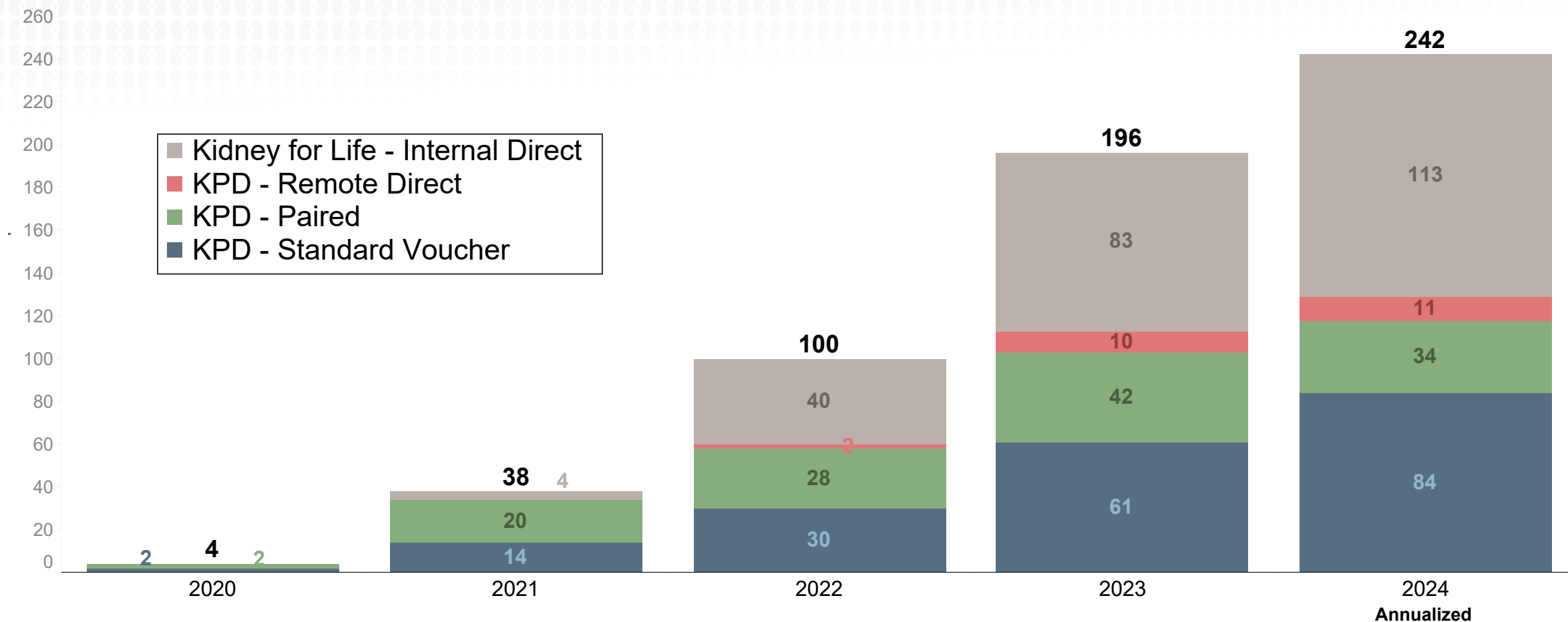
*All High Res. Typed TXPs = Any NKR transplanted patients who completed high-resolution tissue typing

As of 10/4/2024



KFL: Low Eplet Mismatch Transplants

Compatible Pairs



Excludes waitlist

As of 10/4/2024

The Kidney for Life initiative of the National Kidney Registry provides an opportunity for a better donor match.

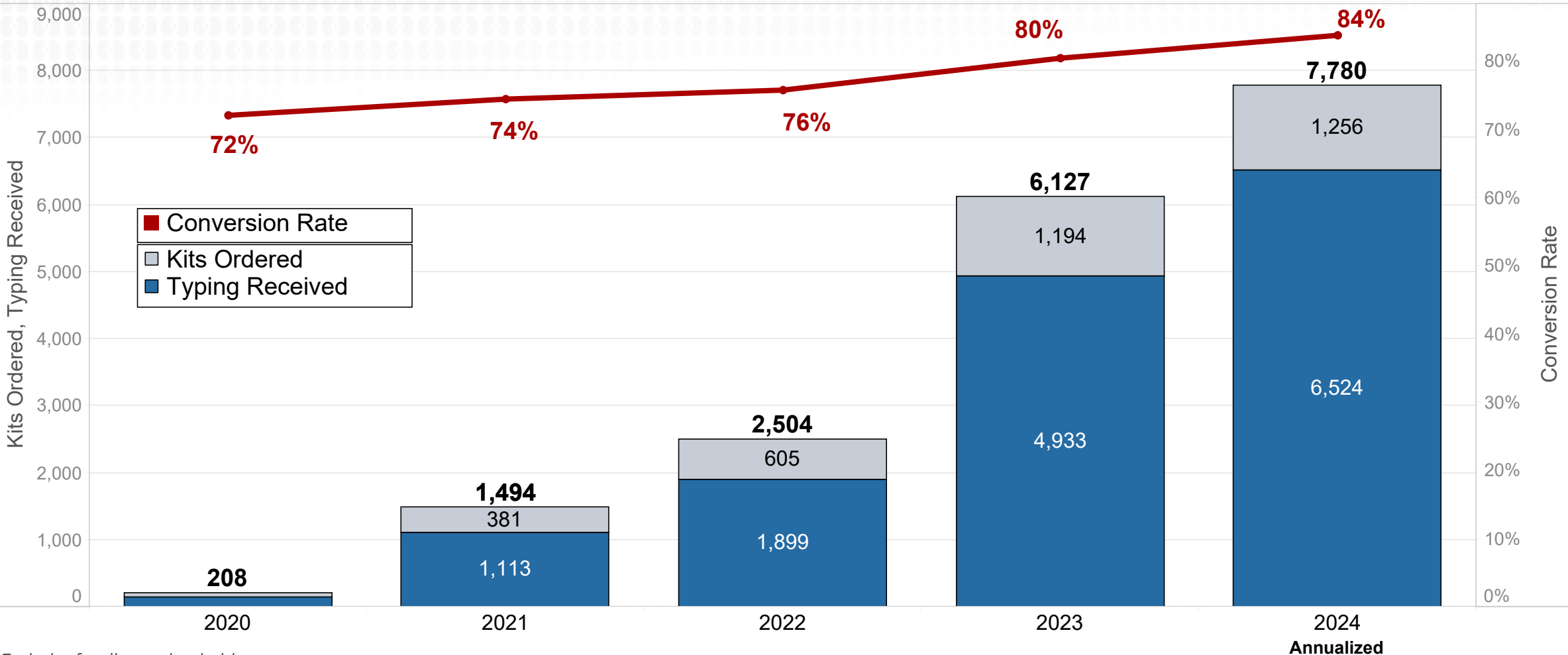
Eplet mismatch categories are based on the definition provided by Wiebe C, Kosmoliaptsis V, Pochinco D, et al. HLA-DR/DQ molecular mismatch: a prognostic biomarker for primary alloimmunity.

Am J Transplant. 2019;19:1708-1719. <https://doi.org/10.1111/ajt.15177>



KFL: DNA Collection for Donors and Patients

More Patients Are Returning the DNA Collection Kits

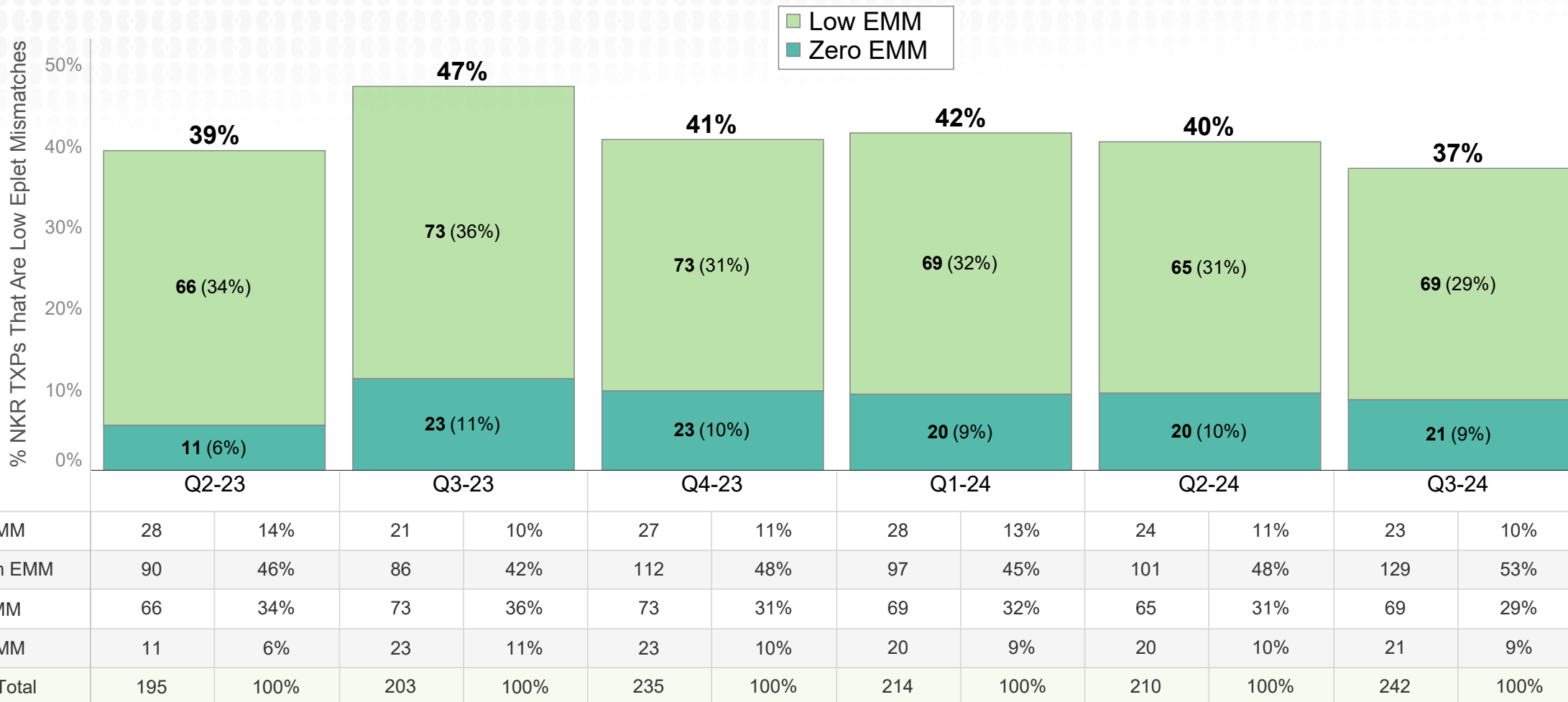


Excludes family voucher holders
Excludes all data within the last 40 days to account for lag time to return the kits
As of 10/4/2024



KFL: Percent of Low Eplet Mismatch Transplants

Voucher and Paired



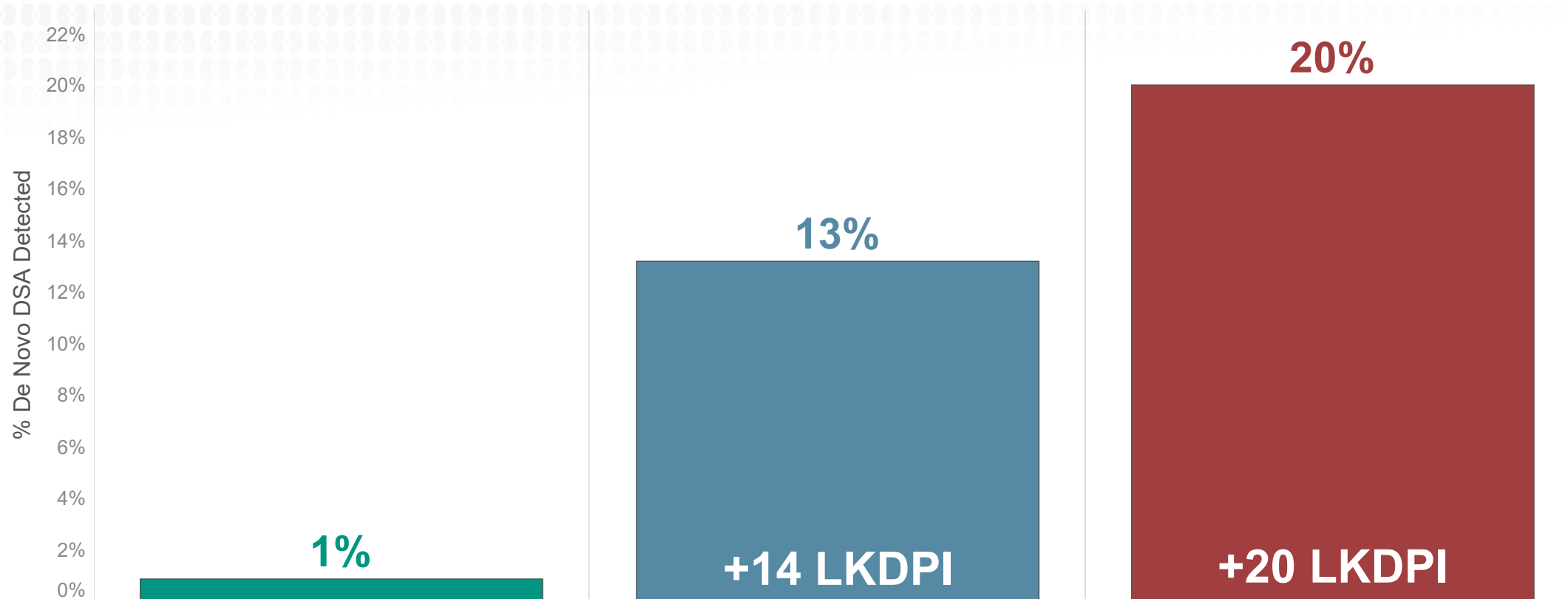
As of 10/4/2024

Eplet mismatch categories are based on the definition provided by Wiebe C, Kosmoliaptsis V, Pochinco D, et al. HLA-DR/DQ molecular mismatch: a prognostic biomarker for primary alloimmunity. *Am J Transplant.* 2019;19:1708–1719. <https://doi.org/10.1111/ajt.15177>



KFL: 1-Year Antibody Screening Result

Unsensitized Recipient



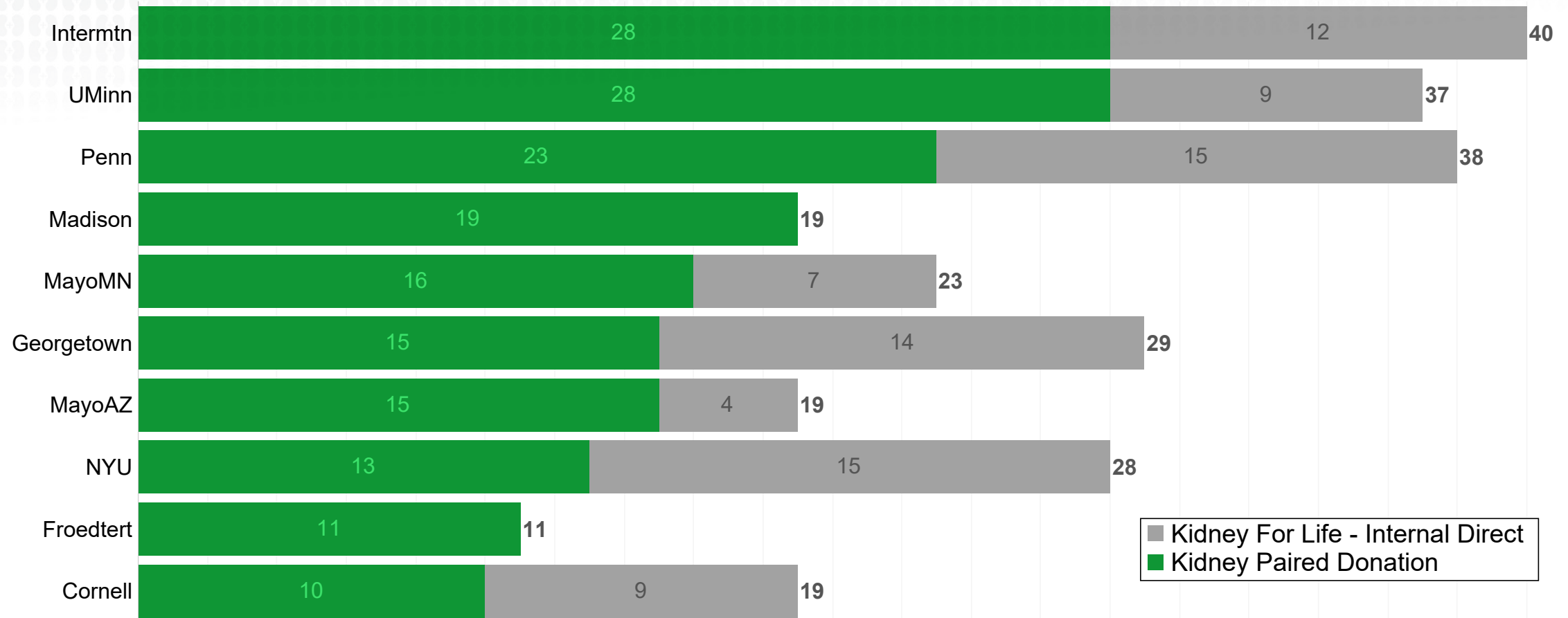
	Low	Med	High
Screening Completed	116	114	30
DN DSA Detected	1	15	6
% DN DSA Detected	1%	13%	20%

Unsensitized recipients have a cPRA of 0
 LKDPI data courtesy of NYU C-STAR (Segev & Massie). LKDPI data pending further validation
 As of 10/4/2024



Top 10 KFL Centers: Low Eplet Mismatch Transplants

Compatible and Incompatible Pairs: Last 12 Months



Excludes waitlist
As of 10/4/2024

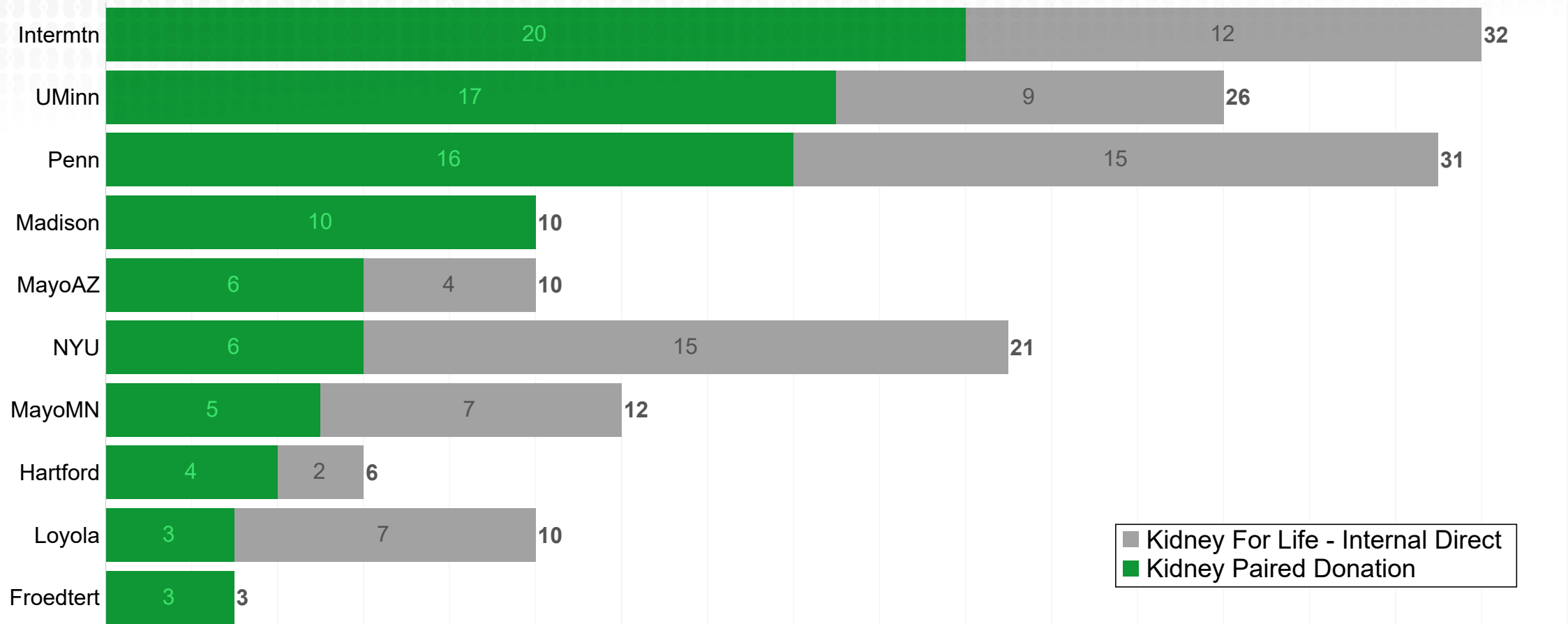
Kidney for Life is an NKR initiative to provide opportunities for better donor matches.

Eplet mismatch categories are based on the definition provided by Wiebe C, Kosmoliaptsis V, Pochinco D, et al. HLA-DR/DQ molecular mismatch: a prognostic biomarker for primary alloimmunity. Am J Transplant. 2019;19:1708-1719. <https://doi.org/10.1111/ajt.15177>



Top 10 KFL Centers: Low Eplet Mismatch Transplants

Compatible Pairs: Last 12 Months



Excludes waitlist
As of 10/4/2024

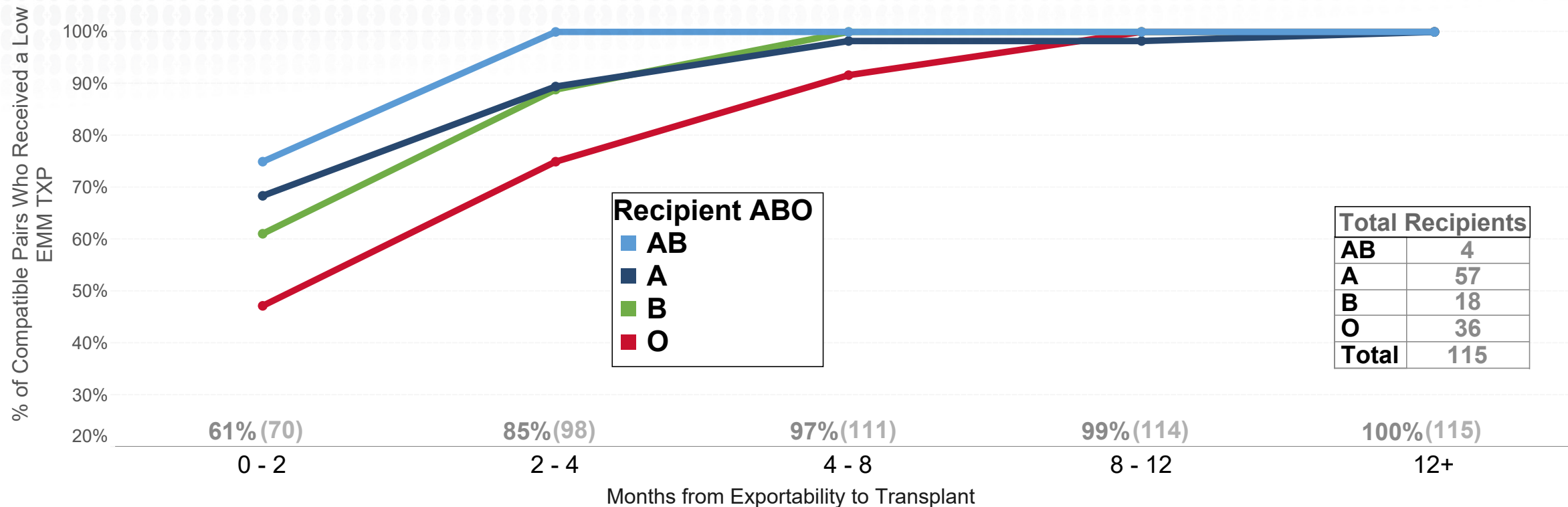
Kidney for Life is an NKR initiative to provide opportunities for better donor matches.

Eplet mismatch categories are based on the definition provided by Wiebe C, Kosmoliaptsis V, Pochinco D, et al. HLA-DR/DQ molecular mismatch: a prognostic biomarker for primary alloimmunity. Am J Transplant. 2019;19:1708-1719. <https://doi.org/10.1111/ajt.15177>



Actual Wait Times: Low Eplet Mismatch Transplants

Compatible Pairs: Last 12 Months

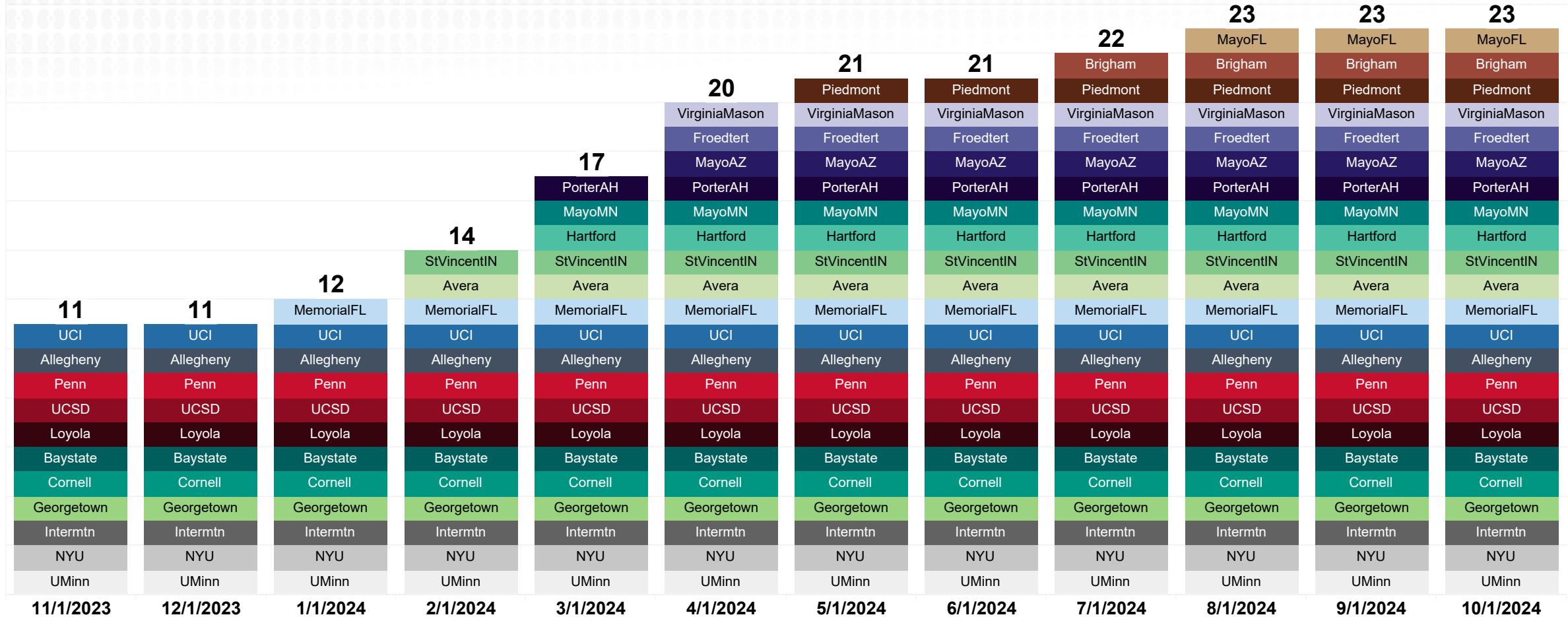


Recipient ABO	0 - 2	2 - 4	4 - 8	8 - 12	12+
AB	75%	100%	100%	100%	100%
A	68%	89%	98%	98%	100%
B	61%	89%	100%	100%	100%
O	47%	75%	92%	100%	100%

Excludes KFL internal direct. cPRA ≤ 99
As of 10/4/2024



KFL: Expert System Center Growth

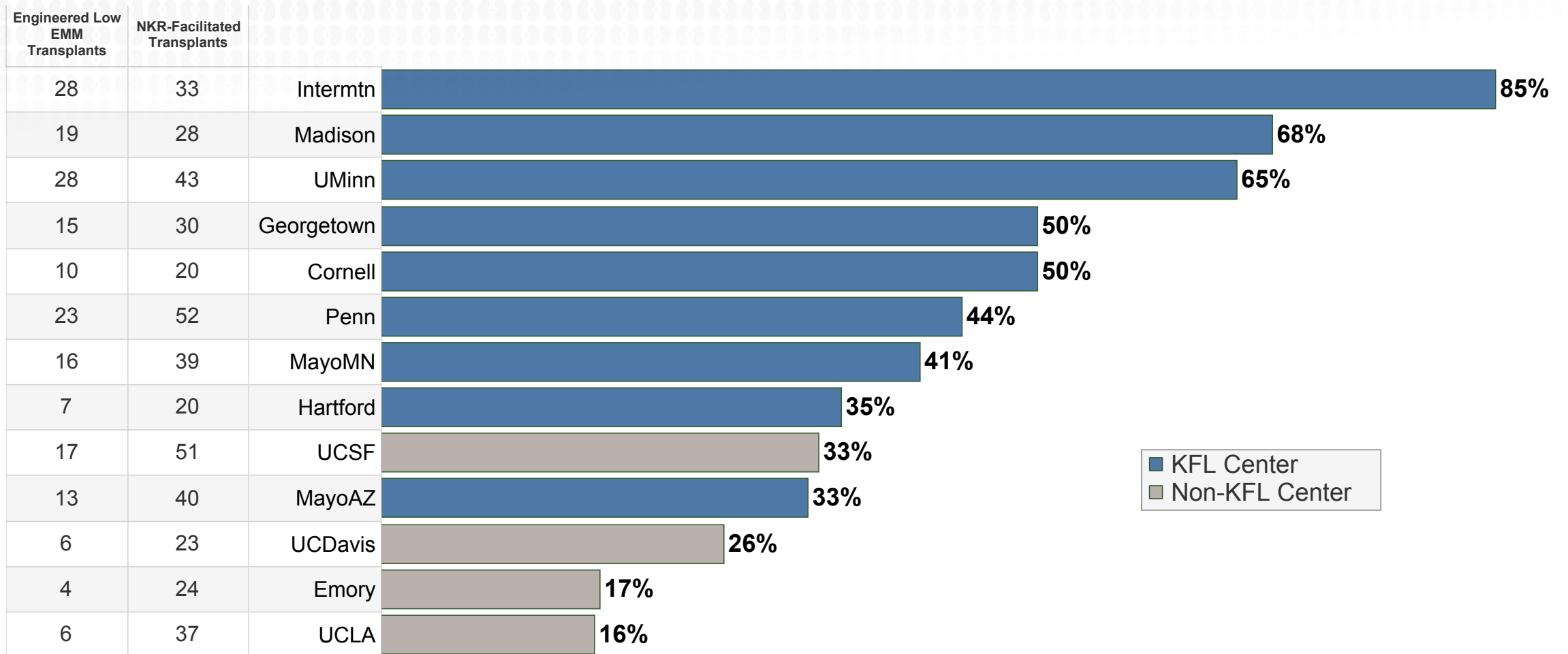


Data recorded the first day of the month
As of 10/4/2024



KFL Top Centers: Engineered Low Eplet Mismatch Transplants

Low EMM TXPs/NKR-Facilitated Transplants: Last 12 Months



*Voucher and paired only
 Minimum 20 NKR facilitated transplants
 As of 10/4/2024*



Resources

NATIONAL KIDNEY REGISTRY
[About](#) [FOR DONORS](#) [FOR PATIENTS](#) [FOR CENTERS](#) [Media](#) [Center Login](#)

Improving Living Kidney Donation & Transplantation
 The National Kidney Registry is dedicated to increasing living kidney donation, ensuring better donor-recipient matches, and providing comprehensive support and protections for living donors.

[I need a kidney transplant](#) [I am considering donating my kidney](#)

9,526
 NKR-Facilitated Transplants

Why the National Kidney Registry:

- Assistance, support and protections for living donors through **Donor Shield**
- Resources for patients and their champions through **#FindaKidney.org**
- Better donor-recipient matches through the **Kidney for Life Initiative**
- Donor Care Network** transplant centers that meet rigorous standards for excellence

Kidney Donor Blog

[Information for Donors](#) [Kidney Donor Stories](#)

[What is the Difference Between](#) [My Kidney Donation Status](#) [Lindav](#)

kidneyregistry.com

DONOR SHIELD

Protecting & Supporting Living Kidney and Liver Donors

Thank you for considering becoming a living donor! Donor Shield protections are available to qualifying living kidney donors and living liver donors to make the donation process easier and more convenient.

To learn more about donor support and protections, find participating transplant centers and find out if you qualify, click the corresponding donor type below.

[Donor Shield for Kidney Donors](#) [Donor Shield for Liver Donors](#)

donor-shield.org

KIDNEY TRANSPLANT CENTERS
 ALL UNITED STATES KIDNEY TRANSPLANT CENTERS RANKED

Compare the performance and services of all kidney transplant centers in the U.S.

[Donors](#) [Recipients](#) [Outcomes \(Adult\)](#) [Outcomes \(Pediatric\)](#)

Rank | Center Name | State | [NKR Transplant \(12 Months\)](#) | [NKR Transplant \(1-5 Years\)](#) | [NKR Transplant \(5-10 Years\)](#) | [NKR Transplant \(10-15 Years\)](#) | [NKR Transplant \(15-20 Years\)](#) | [NKR Transplant \(20+ Years\)](#) | [NKR Transplant \(All Time\)](#) | [NKR Transplant \(All Time\)](#) | [NKR Transplant \(All Time\)](#)

Rank	Center Name	State	12 Months	1-5 Years	5-10 Years	10-15 Years	15-20 Years	20+ Years	All Time	All Time	All Time
1	University of Minnesota Medical Center	MN	83	83	83	83	83	83	83	83	83
2	Mayo Clinic Rochester	MN	88	88	88	88	88	88	88	88	88
3	Hospital of the University of Pennsylvania	PA	81	81	81	81	81	81	81	81	81
4	Mayo Clinic Arizona	AZ	77	77	77	77	77	77	77	77	77
5	MedStar Georgetown University Hospital	DC	45	45	45	45	45	45	45	45	45
6	University of Wisconsin-Madison	WI	63	63	63	63	63	63	63	63	63
7	NYU Langone Health	NY	71	71	71	71	71	71	71	71	71
8	NewYork-Presbyterian/Weill Cornell	NY	71	71	71	71	71	71	71	71	71
9	UCSF Medical Center	CA	51	51	51	51	51	51	51	51	51
10	UCLA Medical Center	CA	49	49	49	49	49	49	49	49	49
11	Harvard Medical Center	MA	33	33	33	33	33	33	33	33	33
12	Louisville University Medical Center	IL	38	38	38	38	38	38	38	38	38
13	Pediment Hospital	GA	48	48	48	48	48	48	48	48	48

Find a center within:
 ZIP (also set on right)
 Zip

Filters:

- Donor Shield Through NKR
- Remote Donation Available
- Waitlist Program Available
- NKR Member Center
- Kidney for Life Participant
- Donor Care Network Center

[Apply Filters](#)

kidneytransplantcenters.org

DONOR CARE NETWORK
 ALL UNITED STATES KIDNEY TRANSPLANT CENTERS RANKED

[Why DCN](#) [DCN Centers](#) [Donor Protections](#) [About](#) [Considering Kidney Donation?](#)

Donor Care Network Centers of Excellence

An elite group of transplant centers offering the highest level of care and support to living kidney donors.

Improved Living Donor Experience

- Best Practices & Continuous Improvement
- Donor Shield Protections
- Easy Online Screening
- Local Testing & Workup
- Remote Donation

donorcarenet.org

KIDNEY FOR LIFE
[For Patients](#) [For Centers](#) [About](#) [I Need a Kidney](#)

Kidney for Life Initiative
 Better matches, fewer graft failures, opportunity for reduced immunosuppressive medications

Why Kidney for Life?
 Better Donor-Recipient Matches

- Reduced Risk Of De Novo Antibodies
- Lower Risk Of Rejection
- Less Risk Of Graft Failure
- Opportunity For Safely Reducing Immunosuppression
- Fewer Side Effects From Immunosuppressive Medication

kidneyforlife.org

FIND A KIDNEY
[Your Search](#) [Microsites](#) [Resources](#) [About](#) [I Need a Kidney](#)

Helping Patients Learn How to Find a Living Kidney Donor

If you are in need of a kidney transplant, the free, personalized microsites offered by the National Kidney Registry can help you find a living donor.

20% of patients with a microsite achieve a living donor transplant **within 12 months**.

[Learn more](#)

648
 Microsite Patients Transplanted

Get Help Finding a Living Kidney Donor

Living kidney donor transplants last longer than deceased donor transplants, yet of the 18,000 annual kidney transplants, only 6,000 are from living donors. Meanwhile, 100,000 people wait on the deceased donor waitlist every year. FindaKidney.org aims to end that imbalance by giving kidney patients the tools and information they need to find a living donor, from instructions and advice on how to search for a donor to personalized donor search websites.

findakidney.org

Donor Games
[Competitions](#) [Workouts](#) [Record Holders](#) [Featured Athletes](#) [Sponsored Athletes](#) [News](#) [Be a Donor](#)

ARE YOU UP FOR THE CHALLENGE OF THE DONOR GAMES?

In a 2023 survey, 73% of respondents felt that donating a kidney would negatively affect their health. The Donor Games refutes this widely held misconception by showcasing the impressive health and fitness of donors from around the country.

[CHECK THE SEASON LEADERBOARD](#)

livingdonorgames.org

